

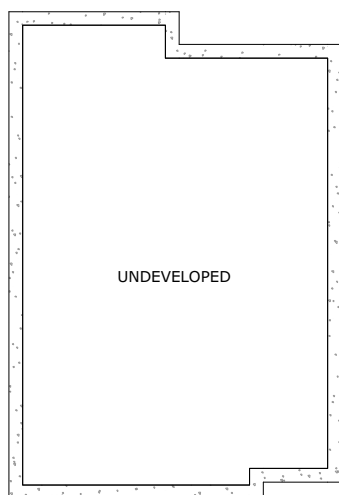
247 WINDFORD CRESCENT SW, AIRDRIE, AB

MAIN - 527.33 Sq.ft. / 48.99 m2
UPPER - 751.69 Sq.ft. / 69.83 m2
RMS TOTAL - 1279.02 Sq.ft. / 118.82 m2
BASEMENT - 495.76 Sq.ft. / 46.06 m2
*FINISHED TOTAL - UNDEVELOPED

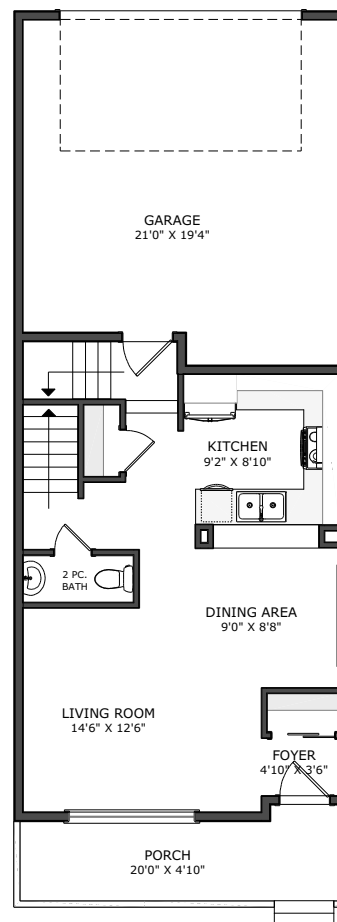
SERGHEI CICALA
CENTURY 21 POWER REALTY
403.370.3335
CICALASERGHEI@GMAIL.COM
MARCH 23, 2020

ROW TOWNHOUSE

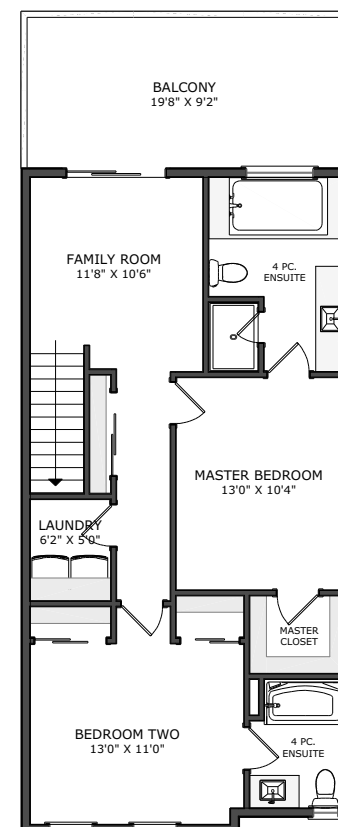
*RECA RMS MEASUREMENTS ARE TAKEN PAINT TO PAINT



BASEMENT



MAIN LEVEL



UPPER LEVEL